

Heatcraft Coil Certified Drawing

1 & 2 ROW HOT WATER CP 1064-E

Customer _____ Customer P.O. Number _____

Job _____

Written by _____ Date _____

Approved by _____ Date _____

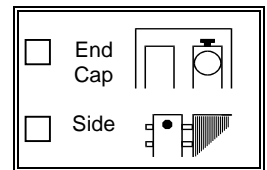
#	TAG	QTY	MODEL NUMBER						
			TYPE	FPI	ROWS DEEP	FIN	FH	FL	
1									
2									
3									
4									

#	DIMENSIONAL DATA																	
	CONNECTION														FLANGES			
	SIZE	A	B	C	D	E	F	H	I	J	L	M	R	S1	S2	T	W	
1																		
2																		
3																		
4																		

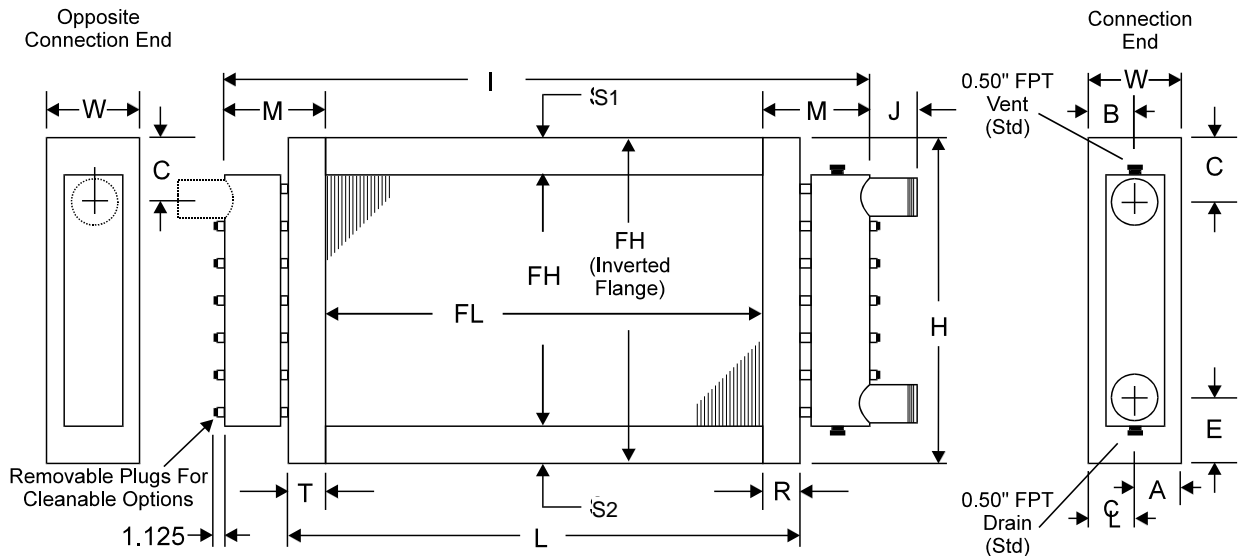
MATERIALS OF CONSTRUCTION				
FINS	AL	CU	CS	St Stl
TUBES	CU	CuNi	CS	St Stl
HEADERS	CU	CuNi	Carbon Stl	St Stl
CONN	CS	Red Brass	Cu Sweat	St Stl
CASING	AL	Galvanized Steel		
	CU	Stainless Steel		

GENERAL OPTIONS	
<input type="checkbox"/>	Inverted Flanges
<input type="checkbox"/>	End Plates Only
<input type="checkbox"/>	Label Kit
<input type="checkbox"/>	Mounting Holes
<input type="checkbox"/>	Corrosion Resistant Coat
<input type="checkbox"/>	Turbospirals

CONN. & V/D OPTIONS	
<input type="checkbox"/>	End Cap 0.125" Tee
<input type="checkbox"/>	Side 0.50" FPT Cpl.
<input type="checkbox"/>	FPT Connections



REMARKS:



GENERAL NOTES

- Coils will vent and drain through factory-installed vent and drain fittings when mounted level for horizontal flow.
- If $S < 1"$ or End Plates Only Case, vents and drains will be located on the side of the header. Connection locations other than standard could affect vent and drain locations. Consult factory.
- Mounting holes are optional. 0.375" diameter holes on 6" centers from the centerline of the fin height and finned length are typical for all flanges. Not available with Inverted Flanges or when $S < 0.75"$.
- All dimensions are in inches.
- Type K coils have removable plugs on both ends.
- Type P coils have removable plugs on connection end only.
- Type Q coils have removable plugs on opposite connection end only.
- With Inverted Flanges or End Plates Only construction, headers will extend a maximum of 0.375" above and below the casing. Vents and drains will be located on the side of the headers.
- Intermediate tube supports are fabricated from heavy gauge stock and supplied per the chart below.

Finned Length (FL)	≤ 48	$> 48 \leq 96$	$> 96 \leq 144$	> 144
Tube Supports	0	1	2	4