

Customer _____ Customer P.O. Number _____

Job _____

Written by _____ Date _____

Approved by _____ Date _____

| # | TAG | QTY | MODEL NUMBER | | | | | | HAND Left Right |
|---|-----|-----|--------------|-----|--------------|-----|----|----|-----------------------|
| | | | TYPE | FPI | ROWS DEEP | FIN | FH | FL | |
| 1 | | | | | | | | | |
| 2 | | | | | | | | | |
| 3 | | | | | | | | | |
| 4 | | | | | | | | | |

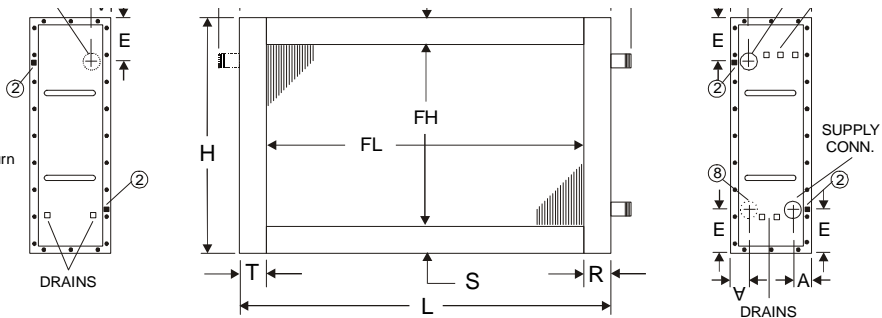
| GENERAL OPTIONS | |
|--------------------------|-----------------------------|
| <input type="checkbox"/> | Label Kit |
| <input type="checkbox"/> | Mounting Holes |
| <input type="checkbox"/> | Corrosion Resistant Coating |

| MATERIALS OF CONSTRUCTION | |
|---------------------------|---------------------------------|
| FINS | AL CU CS St Stl |
| Fin Thick | |
| TUBES | CU CuNi CS St Stl |
| Tube Size | |
| HEADERS | CU CuNi CS St Stl |
| CONN | CS Cu Sweat Red Brass St Stl |
| CASING | AL CU Galv Stl St Stl |

| # | DIMENSIONAL DATA | | | | | | | | | | | | |
|---|------------------|---|---|---|---|---|---|---------|---|---|---|------|--|
| | CONNECTION | | | | | | | FLANGES | | | W | FIG# | |
| | SIZE | A | E | H | J | L | M | R | S | T | | | |
| 1 | | | | | | | | | | | | | |
| 2 | | | | | | | | | | | | | |
| 3 | | | | | | | | | | | | | |
| 4 | | | | | | | | | | | | | |

KH, KS, KD
Cleanable
Both Ends

General Notes
8. KH return
9. KS, 4 & 8 Row
KD return
10. 6 Row KD return



REMARKS:

Figure 2

PS, PD
Cleanable
Supply End

General Notes
8. Return connection
9. 6 Row PD return

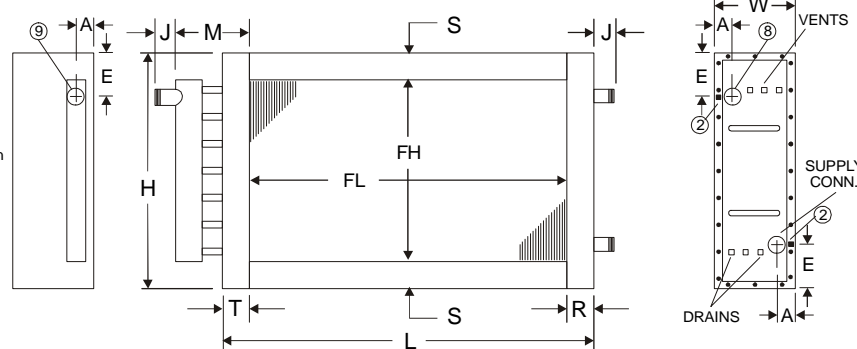
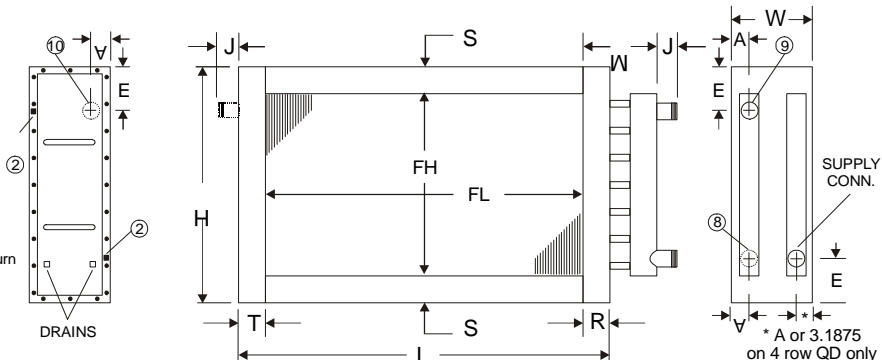


Figure 3

QH, QS, QD
Cleanable
Opposite
Supply End

General Notes
8. QH return
9. QS, 4 & 8 Row
QD return
10. 6 Row QD return



GENERAL NOTES

1. Mounting holes are optional. 0.375" diameter holes on 6" centers from the centerline of the fin height and finned length are typical for all flanges. Not available when S < 1".
2. Jackscrews are provided to facilitate head removal.
3. All dimensions are in inches.
4. The supply line should be connected to the lower connection on the leaving air side for counterflow operation.
5. 1" wide reinforcement bars may extend past flanges.
6. Phenolic coated coils require a longer lead-time since they must be re-tested after coating.
7. Intermediate tube supports are fabricated from heavy gauge stock and supplied per the chart to the below.

| Finned Length (FL) | Tube Supports |
|--------------------|---------------|
| ≤ 48 | 0 |
| > 48 ≤ 96 | 1 |
| > 96 ≤ 144 | 2 |
| > 144 | 4 |

* A or 3.1875 on 4 row QD only